

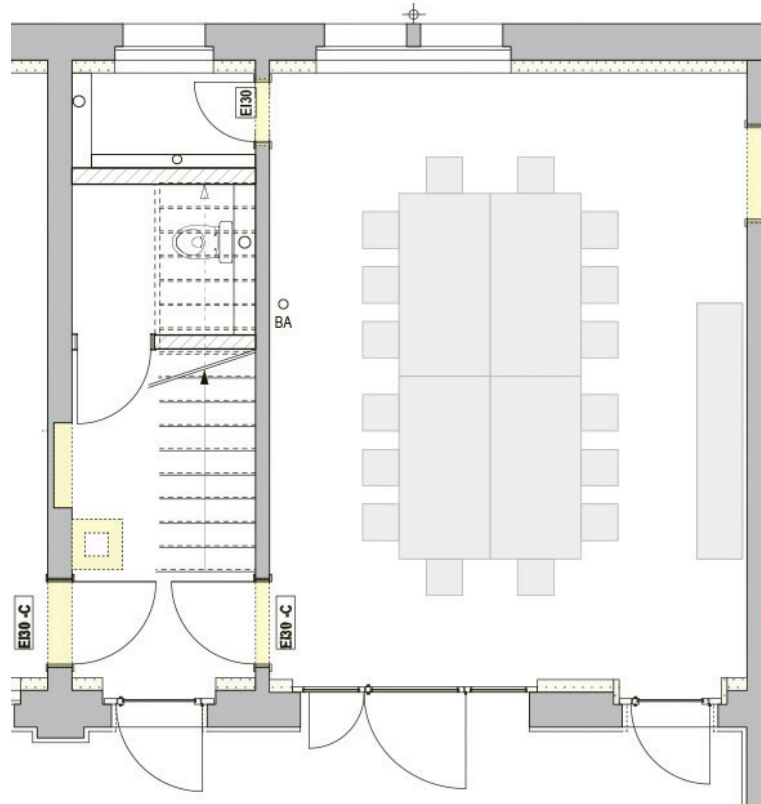
# HOTEL AUBERGE

LANGENTHAL

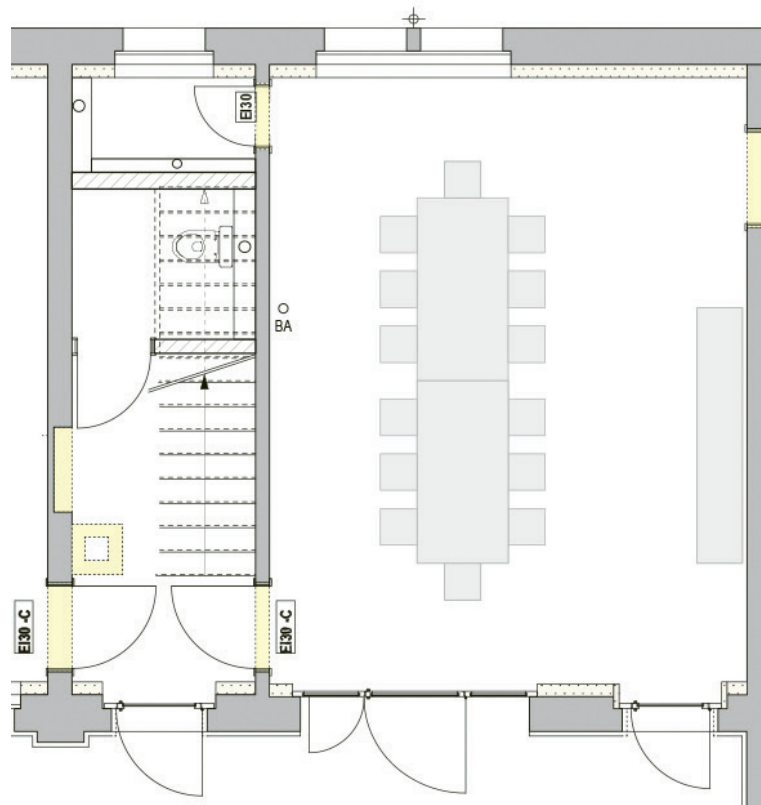
## *Bestuhlungsmöglichkeiten Kleiner Seminarraum 25 m<sup>2</sup>*



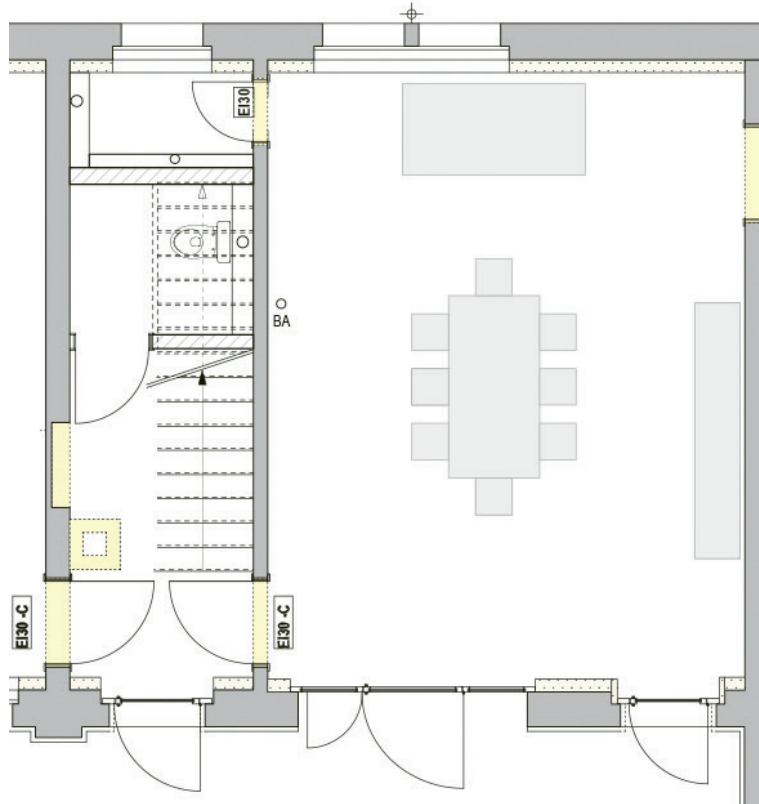
4 Tische, 16 Stühle



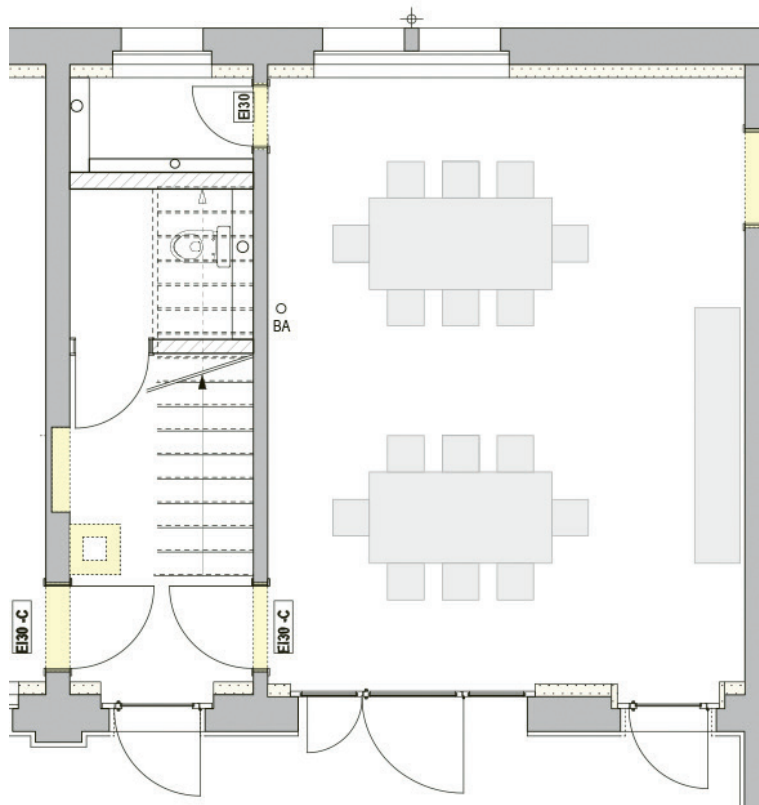
2 Tische, 14 Stühle



1 Tisch, 8 Stühle



2 Tische, 16 Stühle



# 3 Tisch, 11 Stühle

