

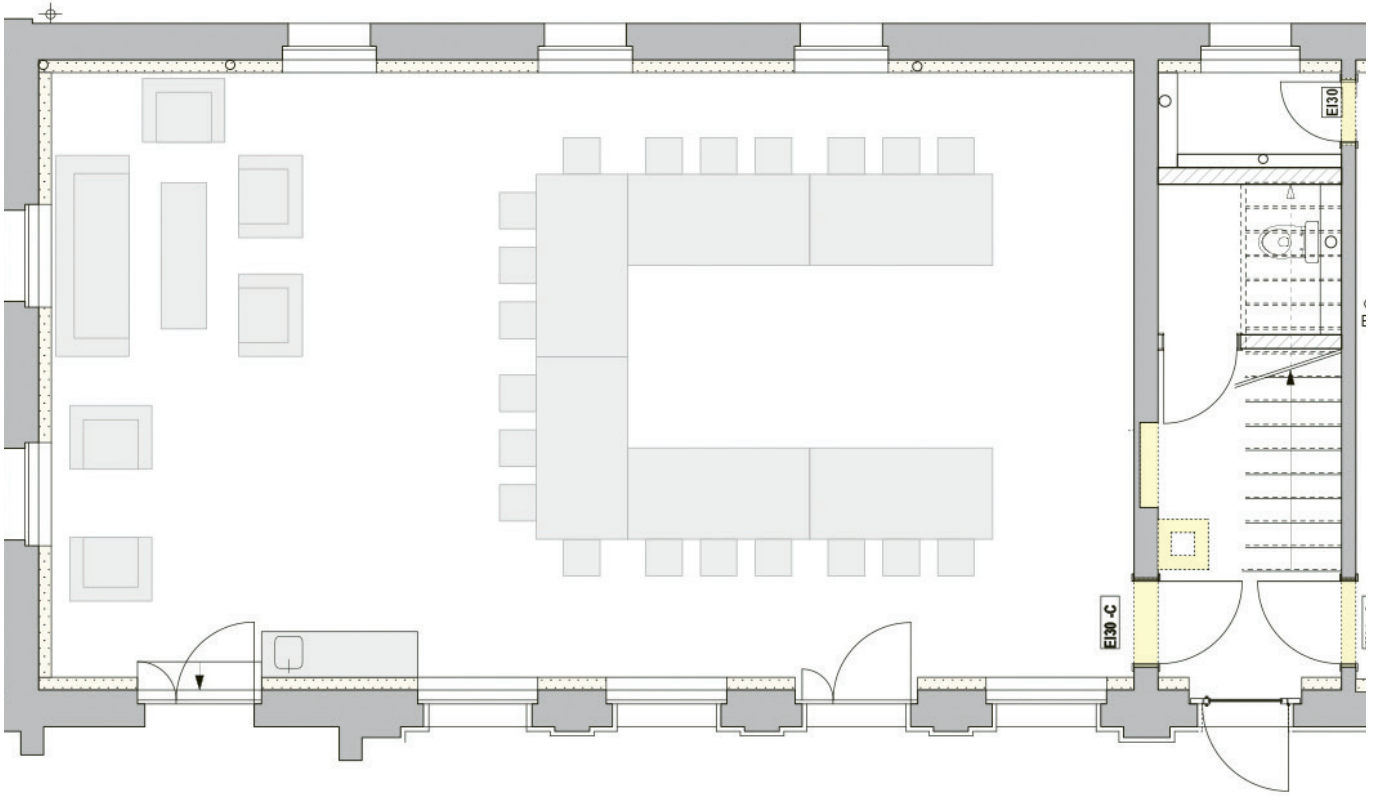
HOTEL AUBERGE

L A N G E N T H A L

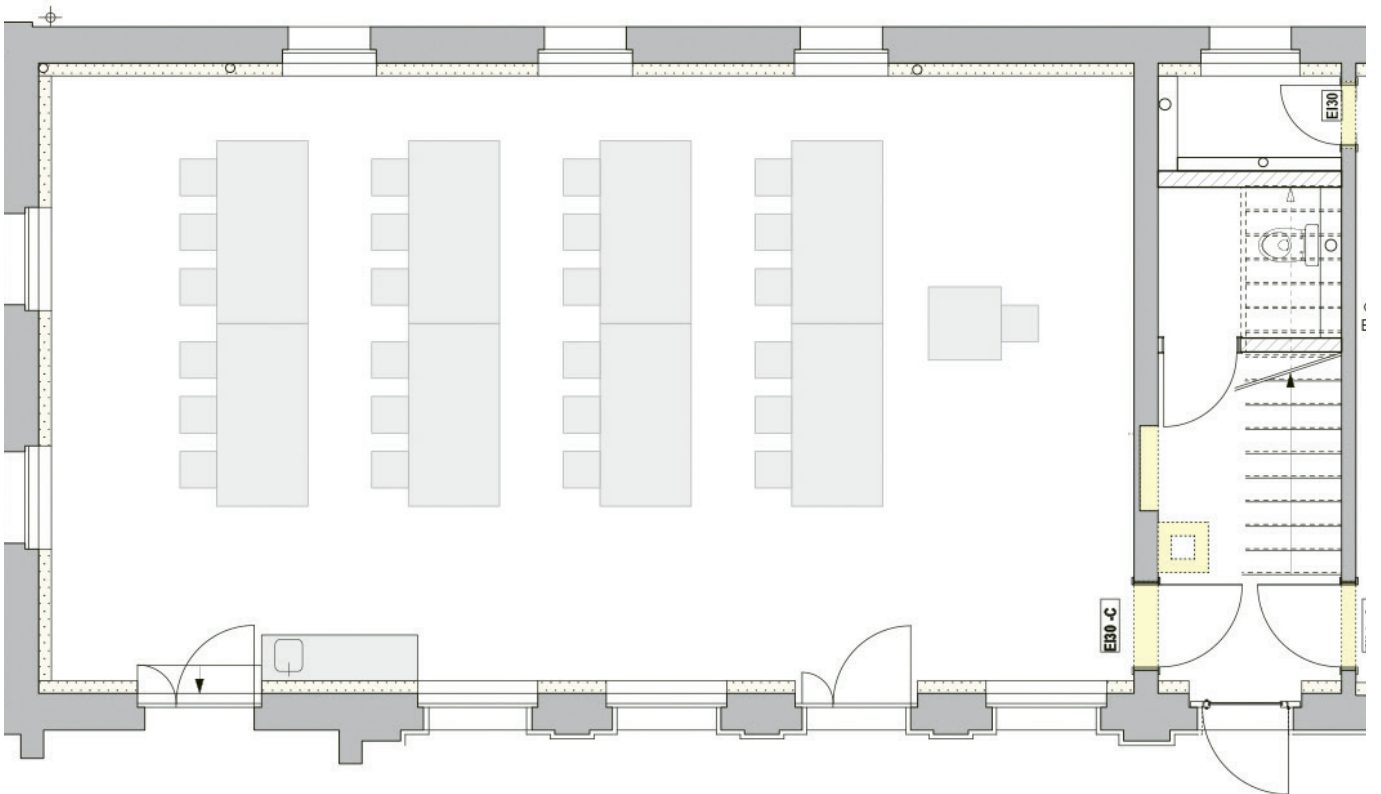
Choice of seating arrangements for the large seminar room 84 m²



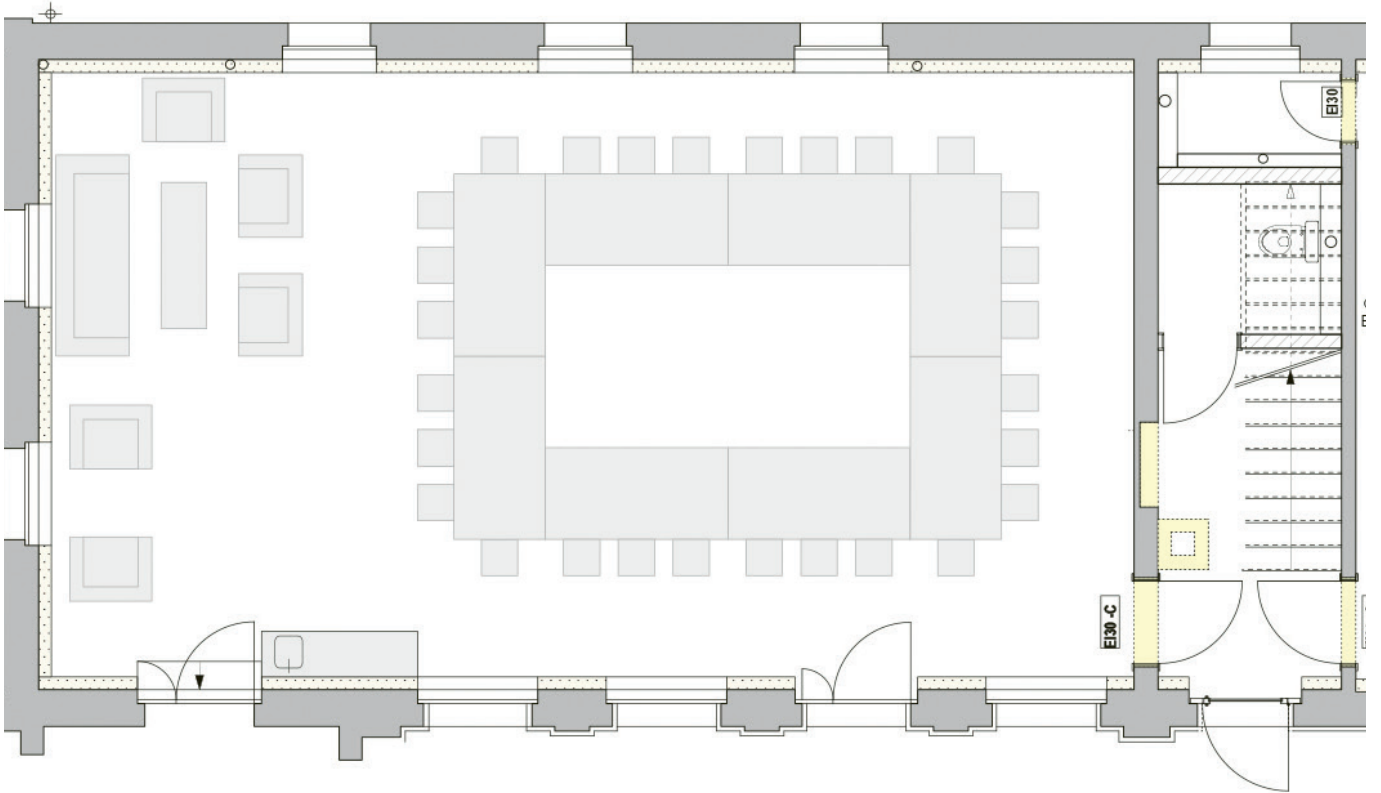
6 tables, 20 chairs



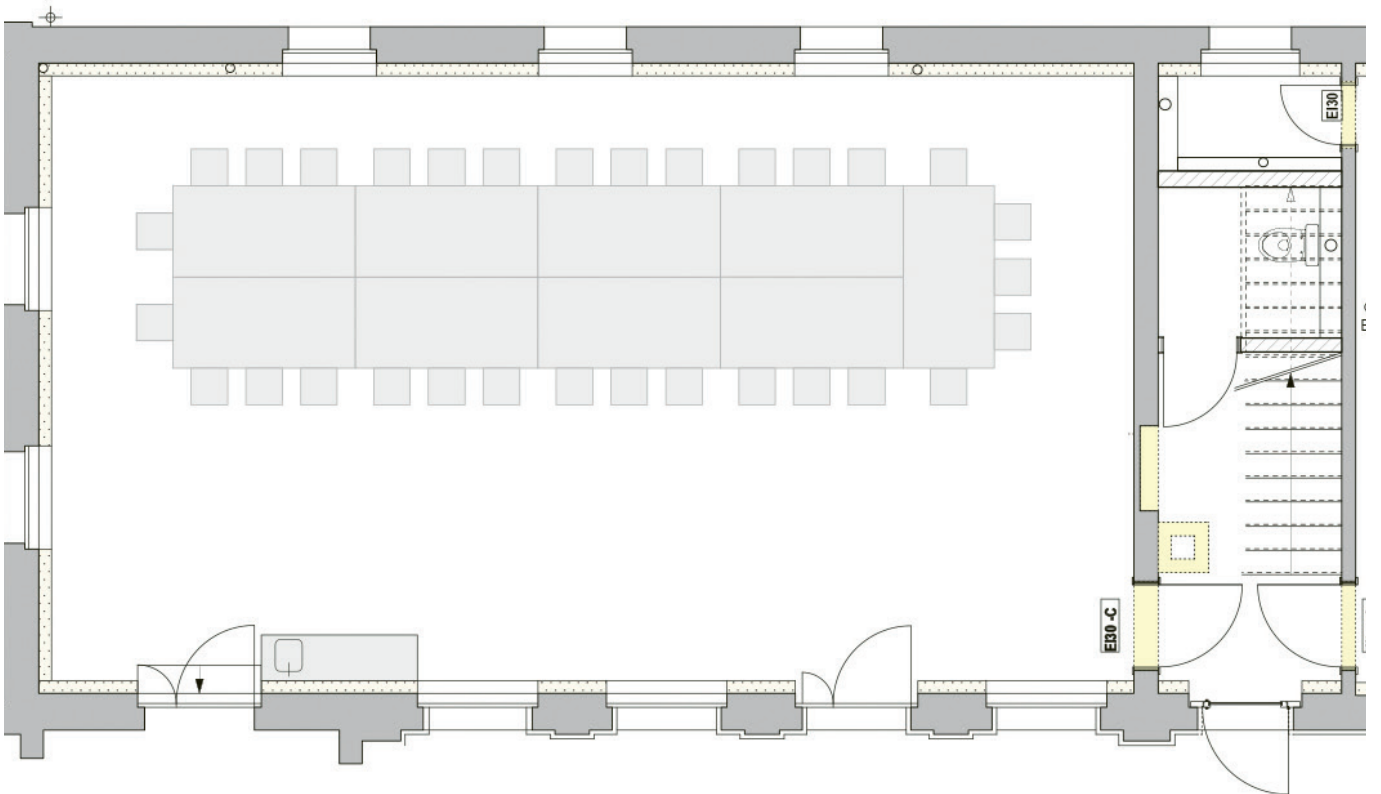
8 tables, 24 chairs



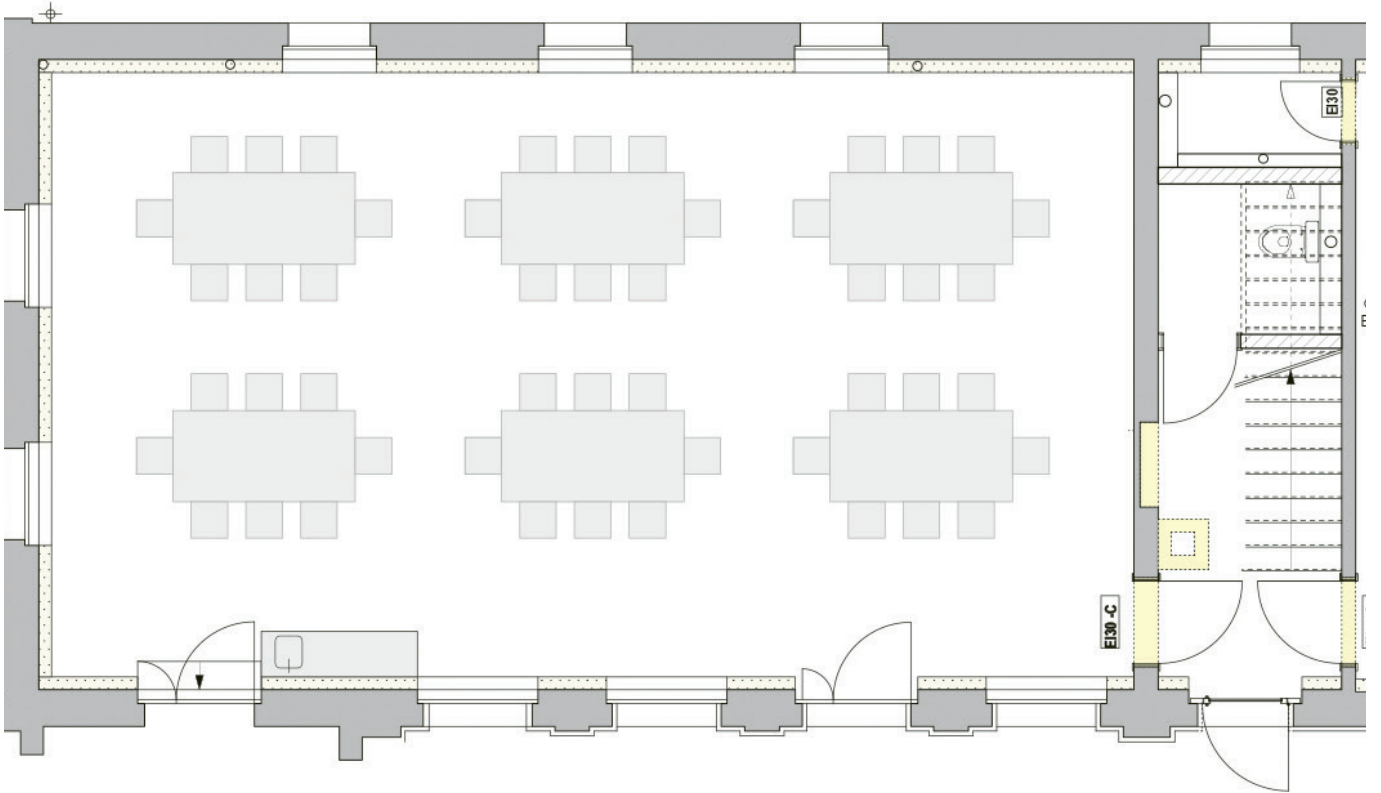
8 tables, 28 chairs



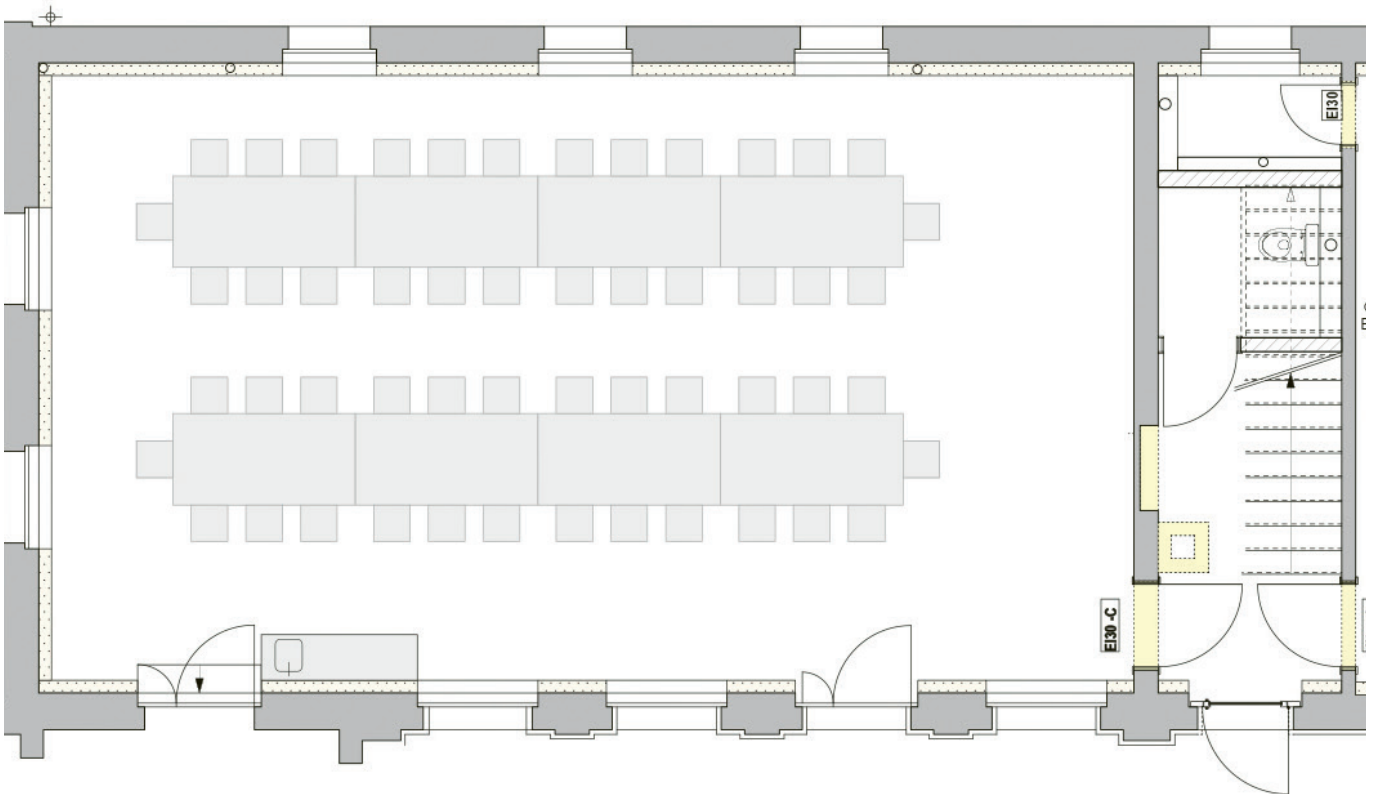
9 tables, 31 chairs



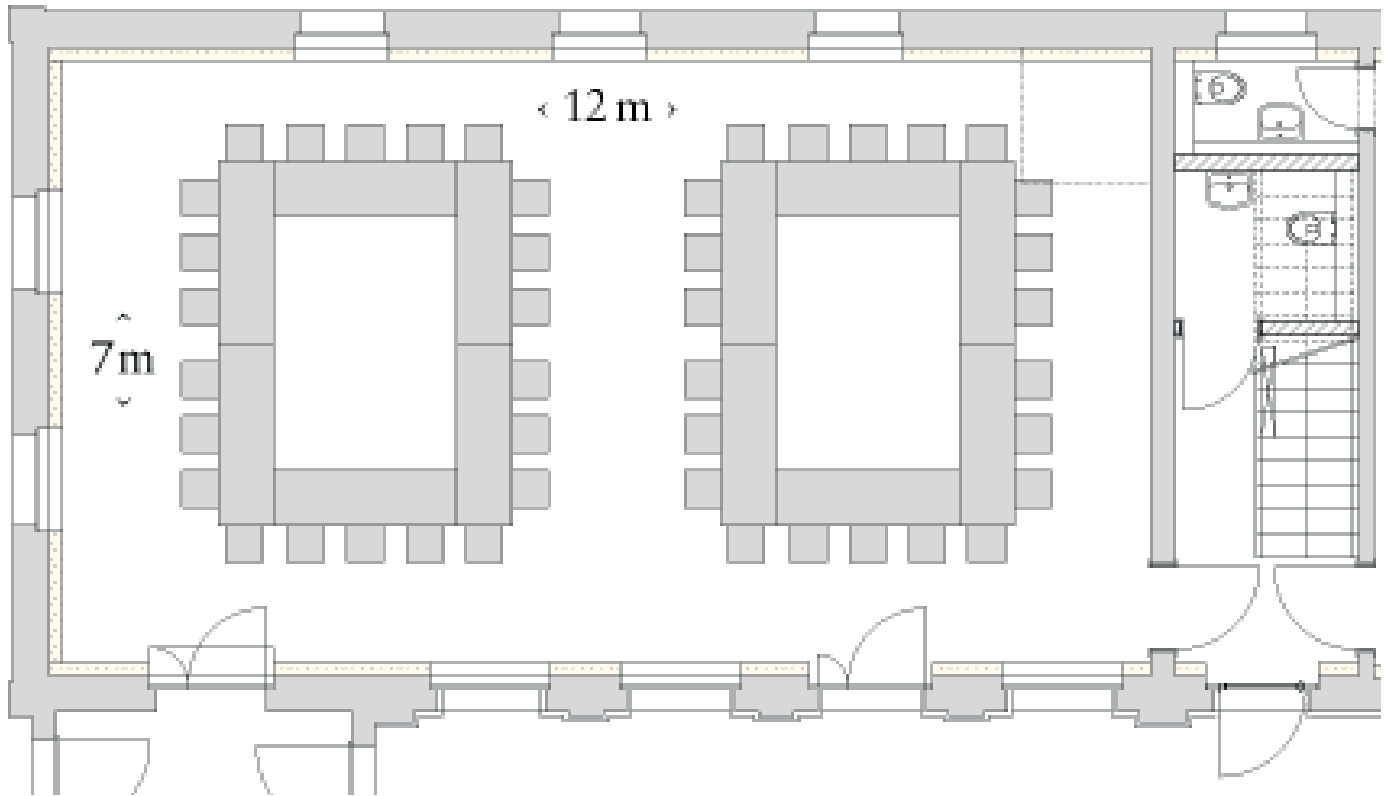
6 tables, 48 chairs



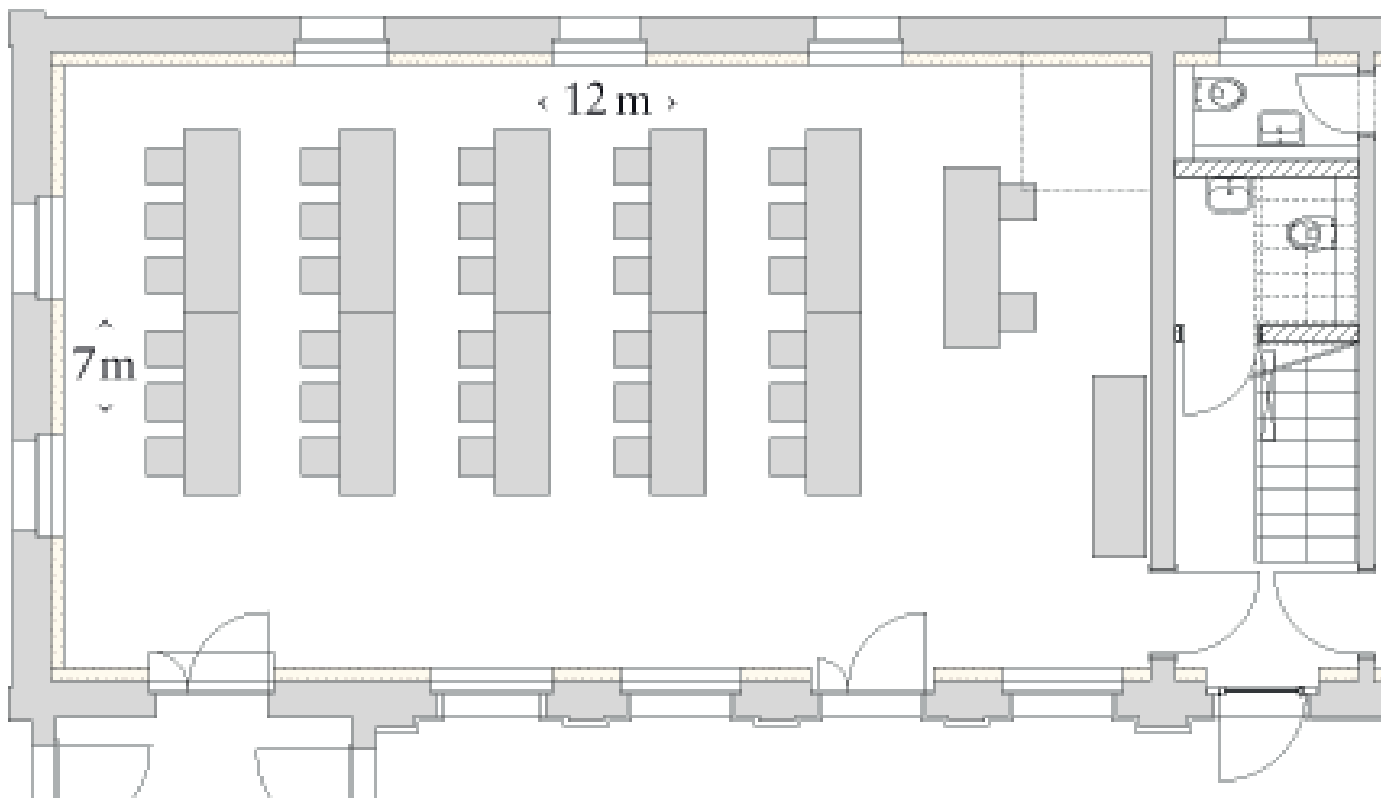
8 tables, 52 chairs



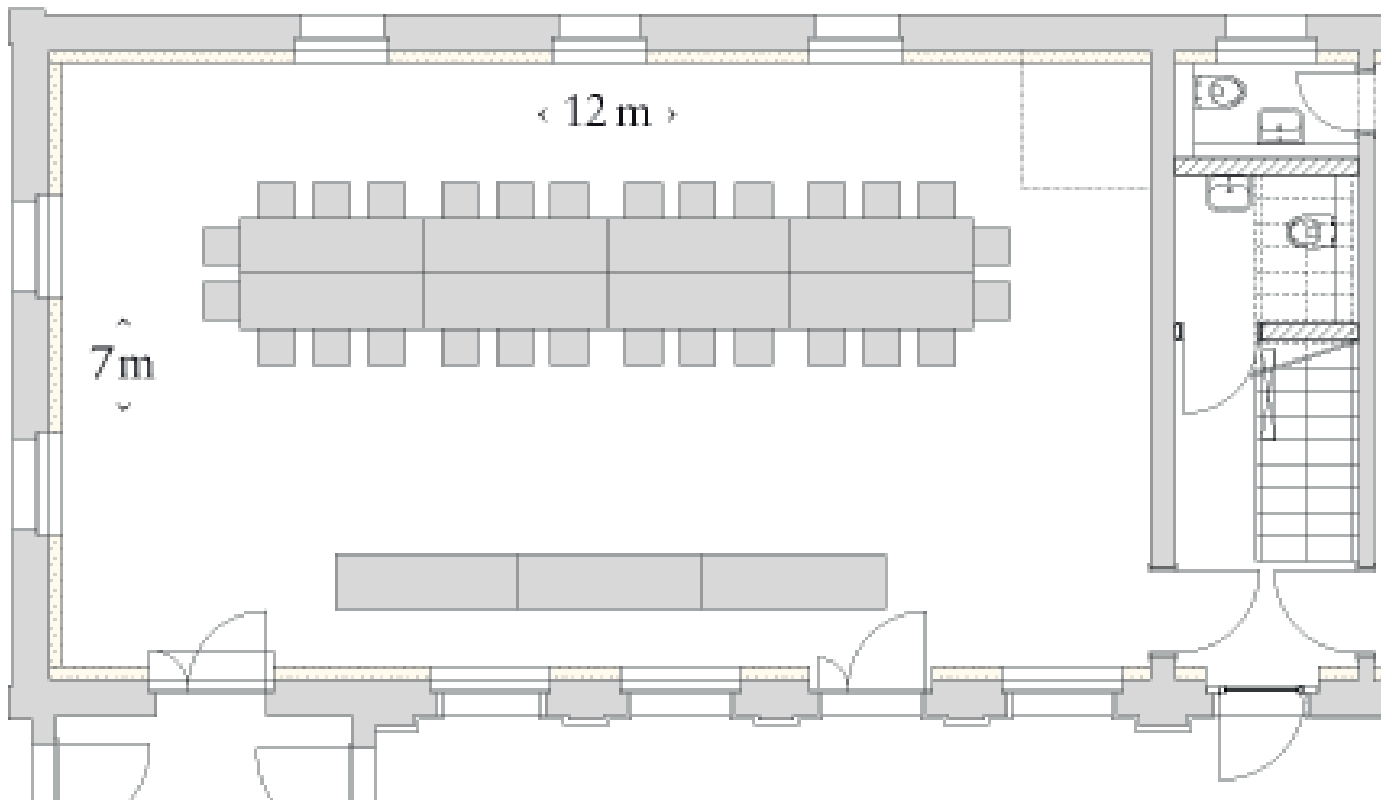
12 tables, 44 chairs



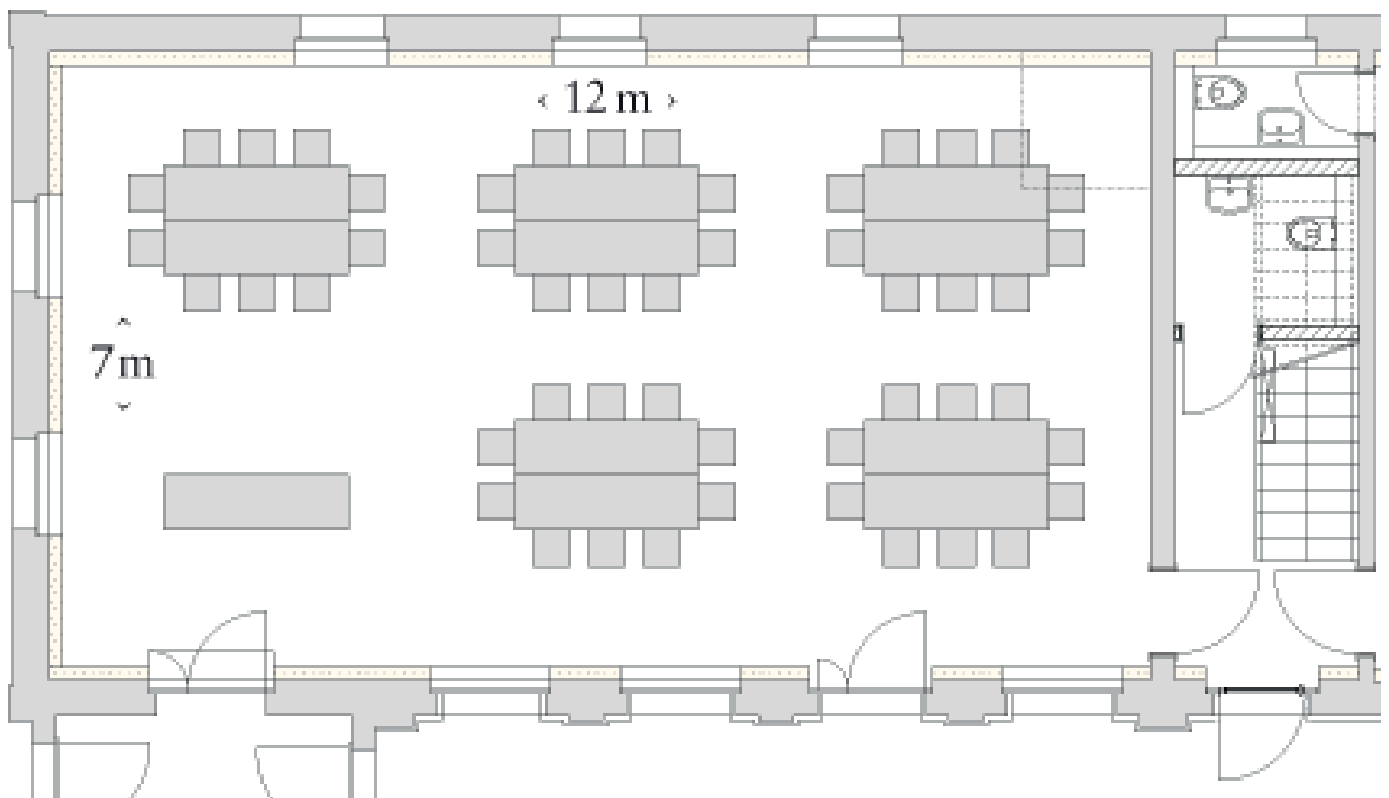
11 tables, 32 chairs



8 tables, 28 chairs



10 tables, 50 chairs



Banquet seating: 8 tables, 64 chairs

