

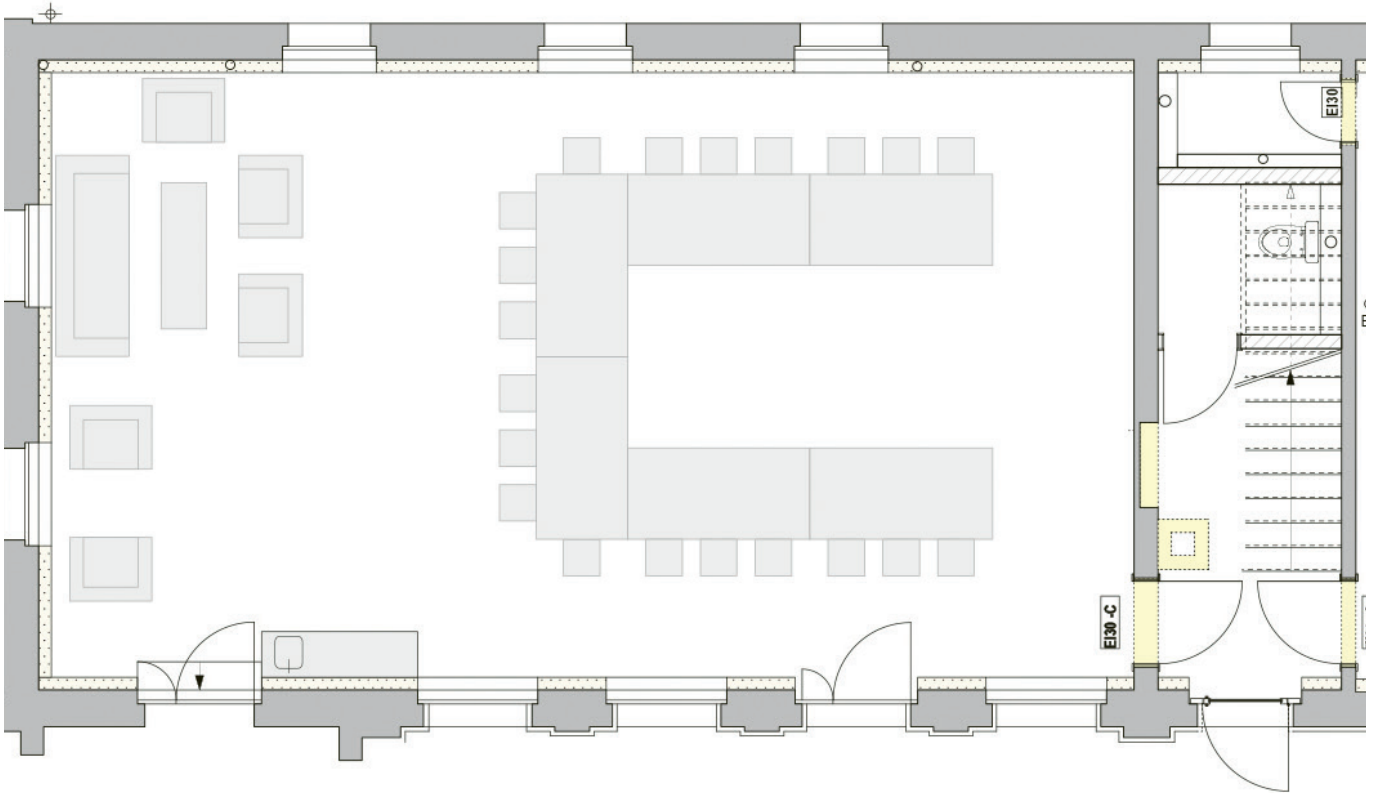
HOTEL AUBERGE

LANGENTHAL

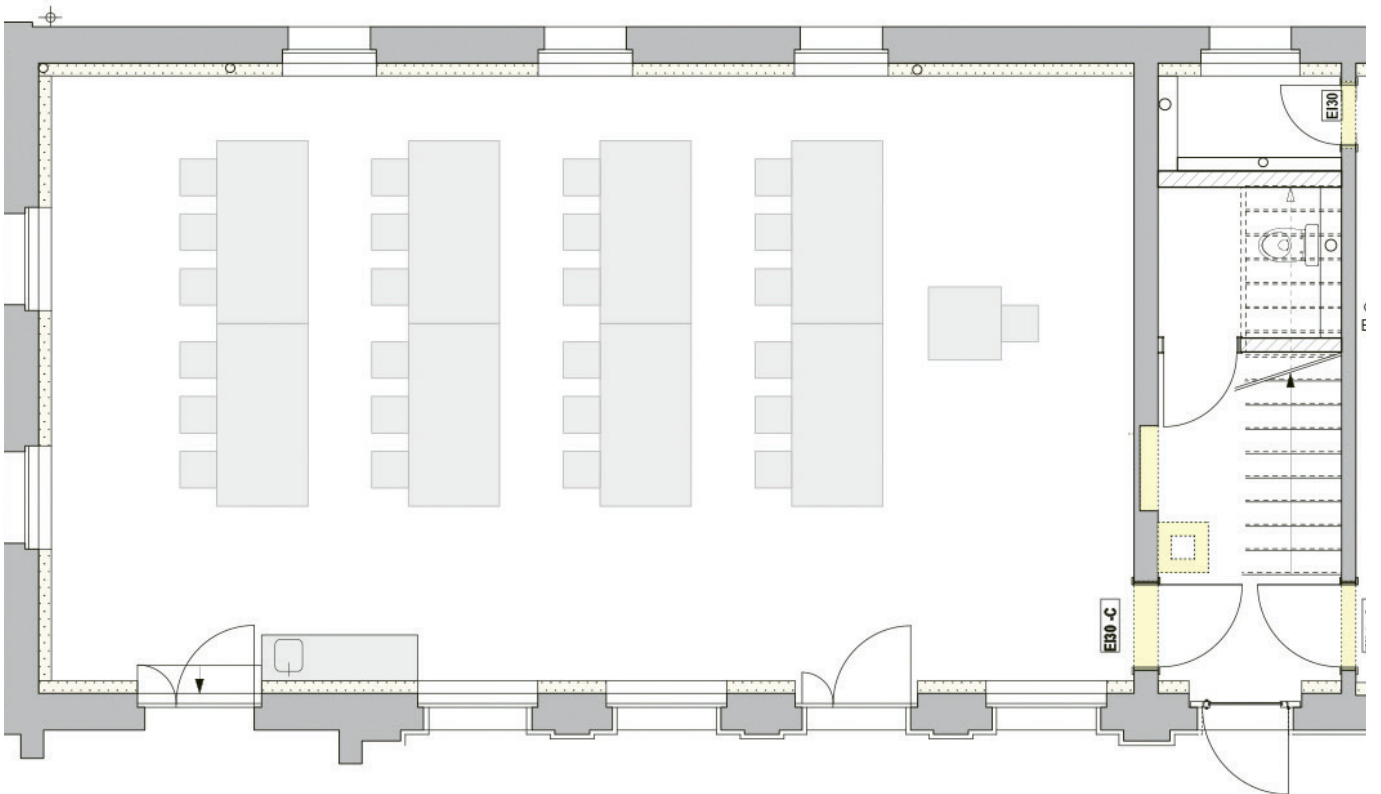
Bestuhlungsmöglichkeiten Grosser Seminarraum 84 m²



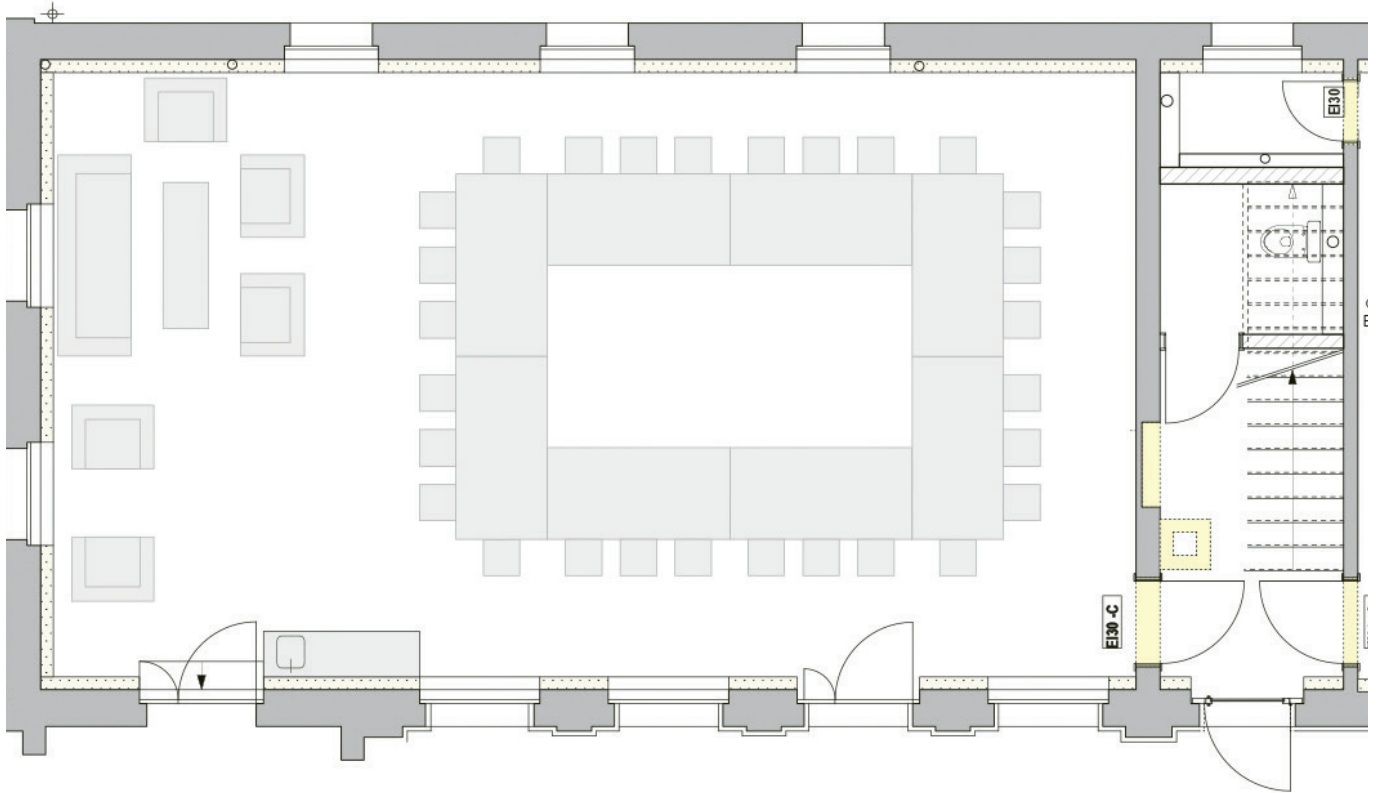
6 Tische, 20 Stühle



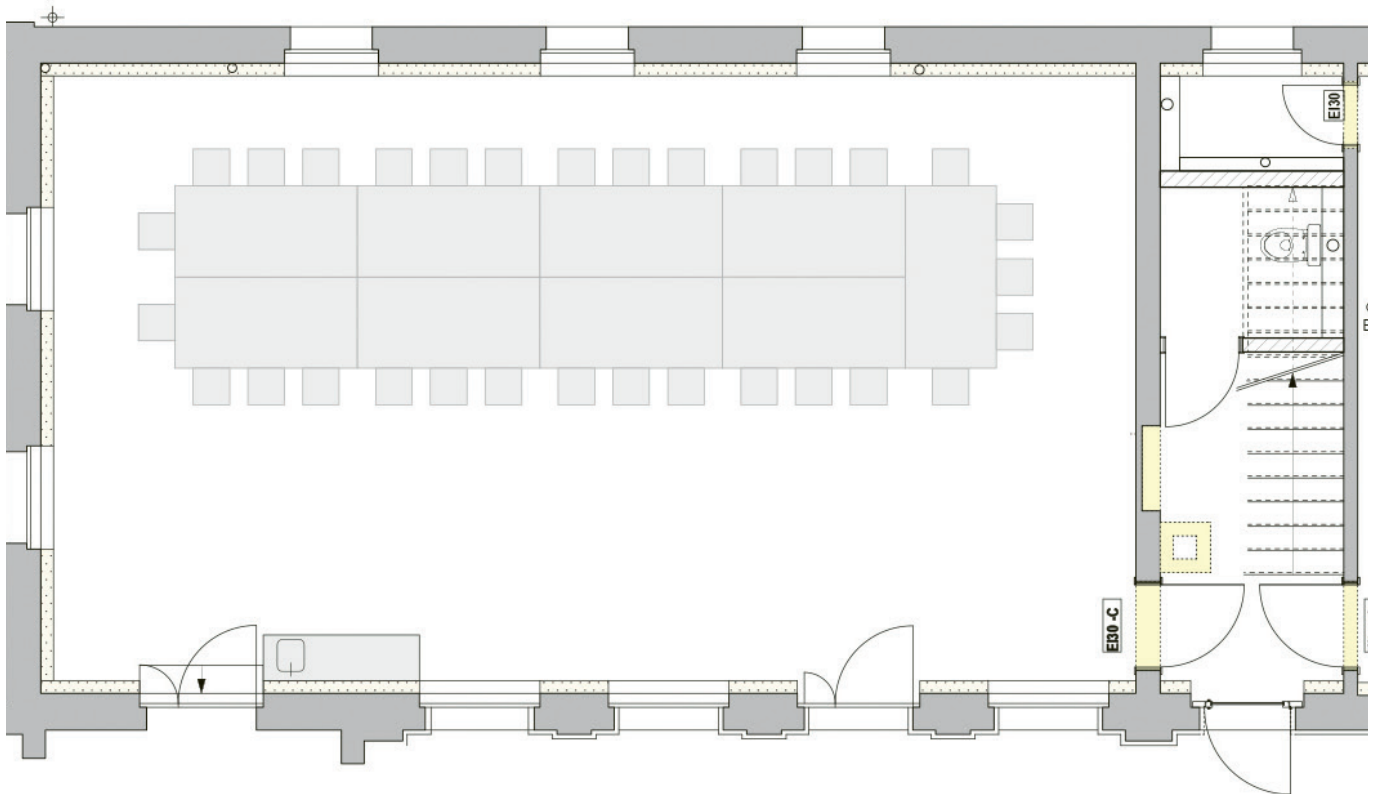
8 Tische, 24 Stühle



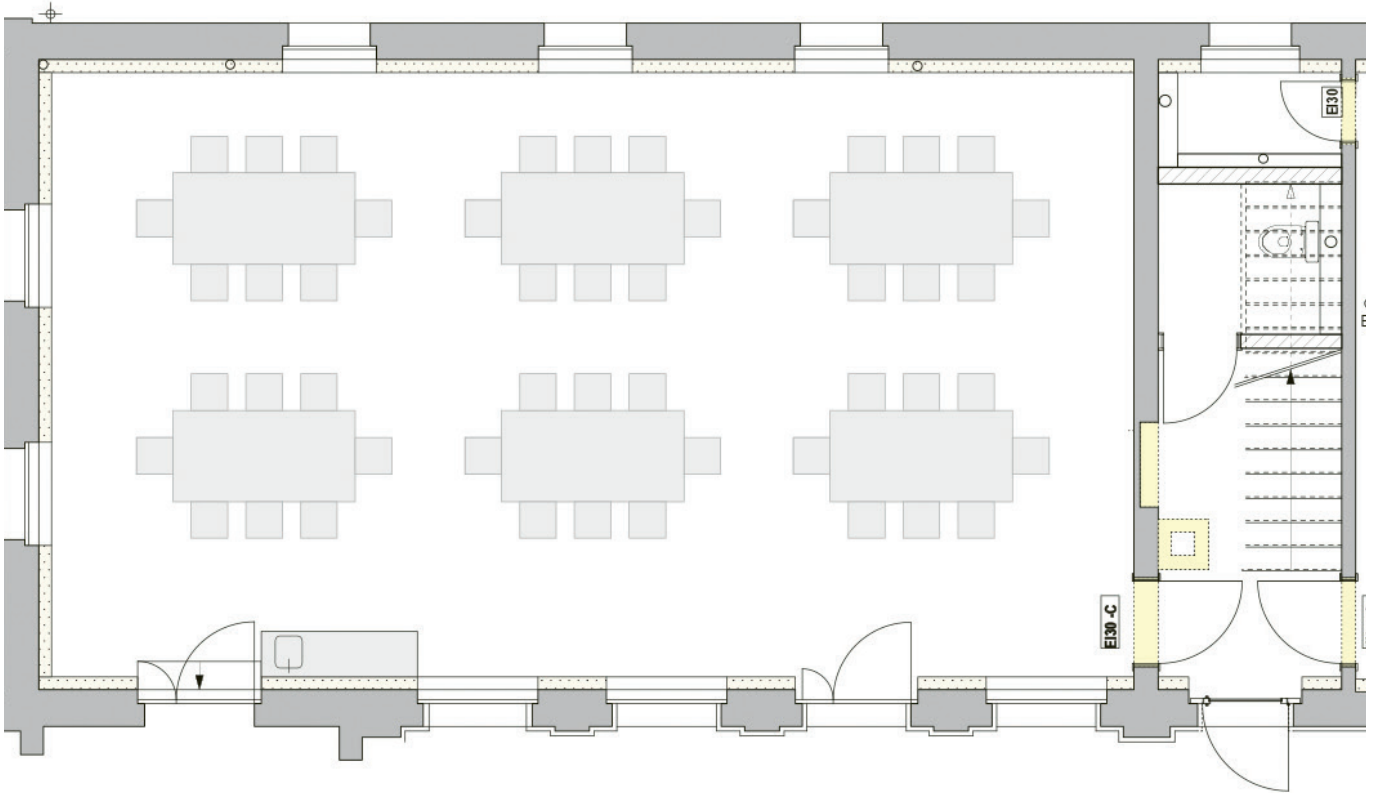
8 Tische, 28 Stühle



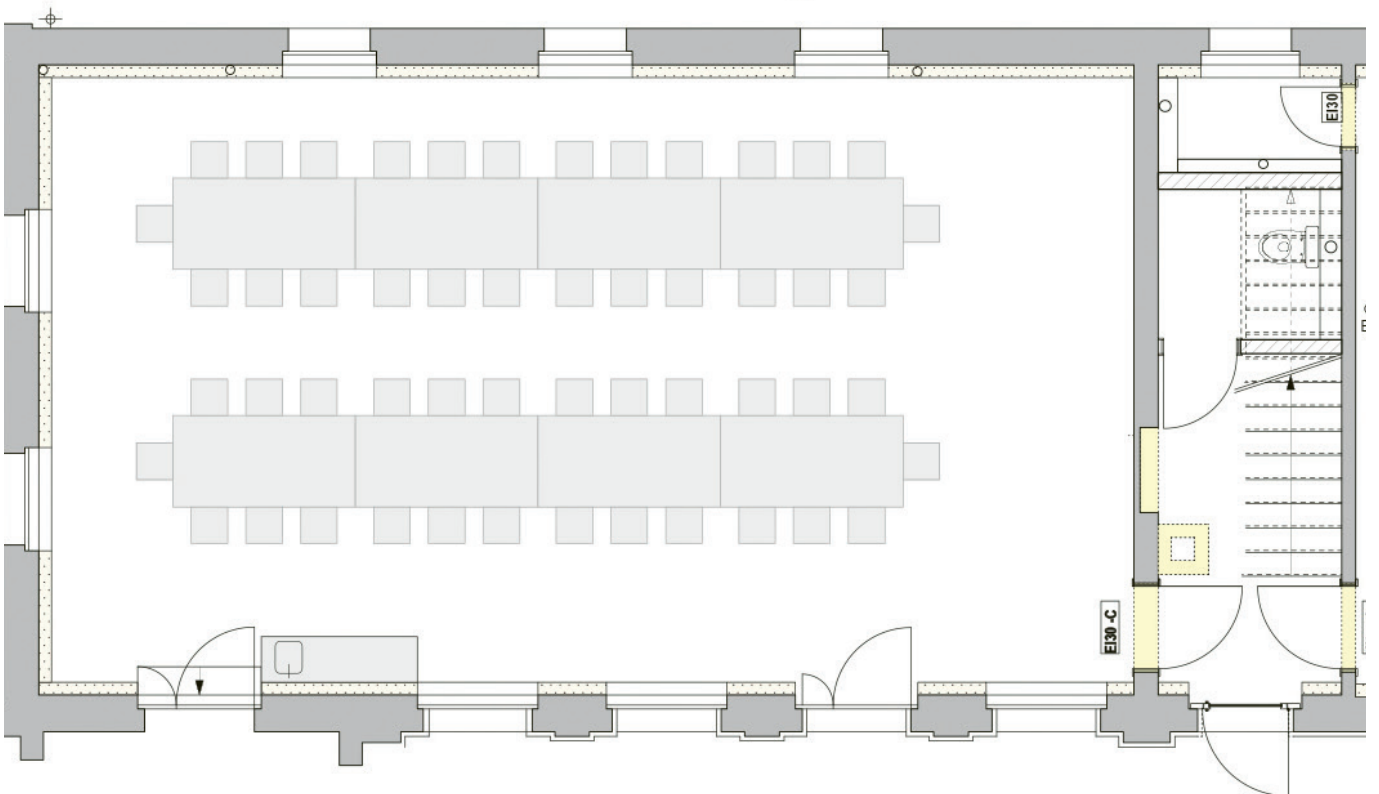
9 Tische, 31 Stühle



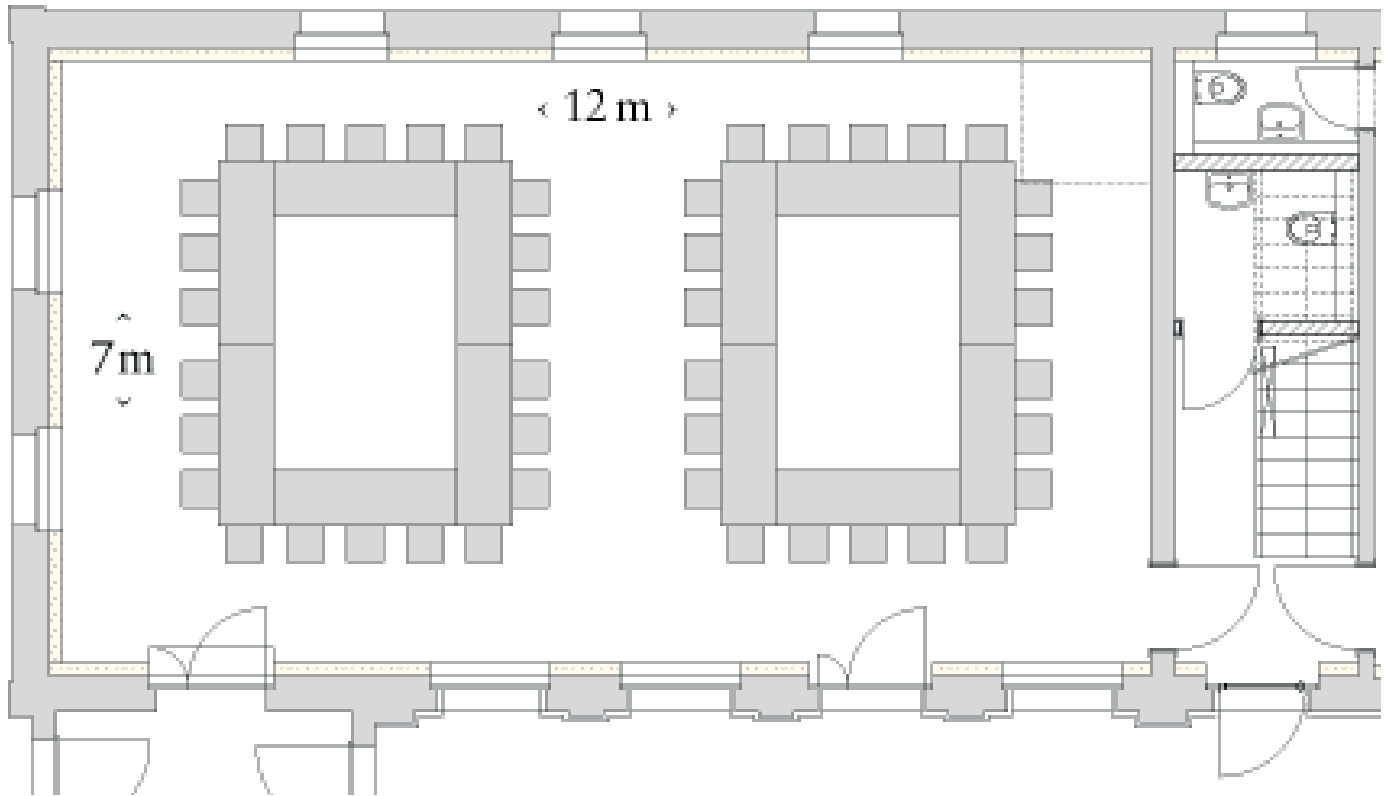
6 Tische, 48 Stühle



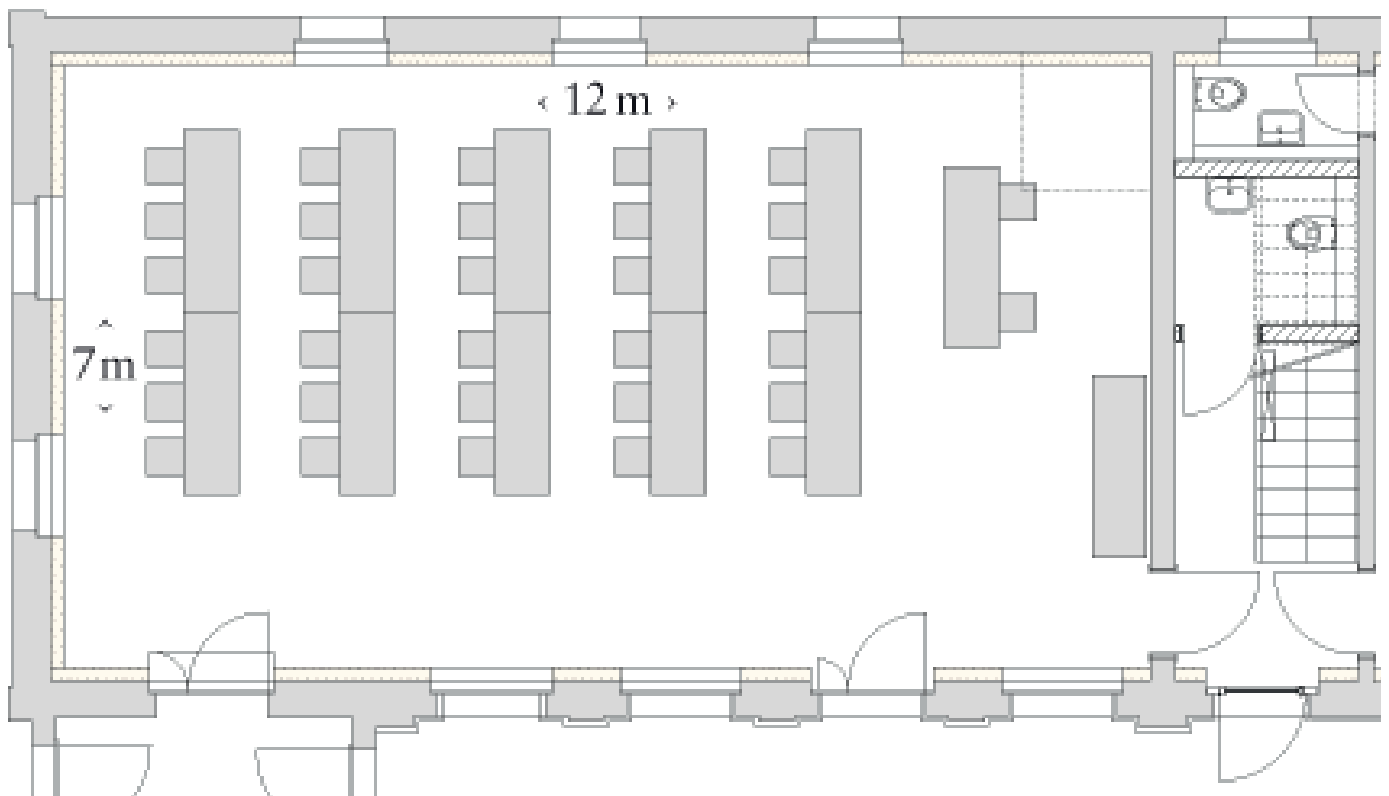
8 Tische, 52 Stühle



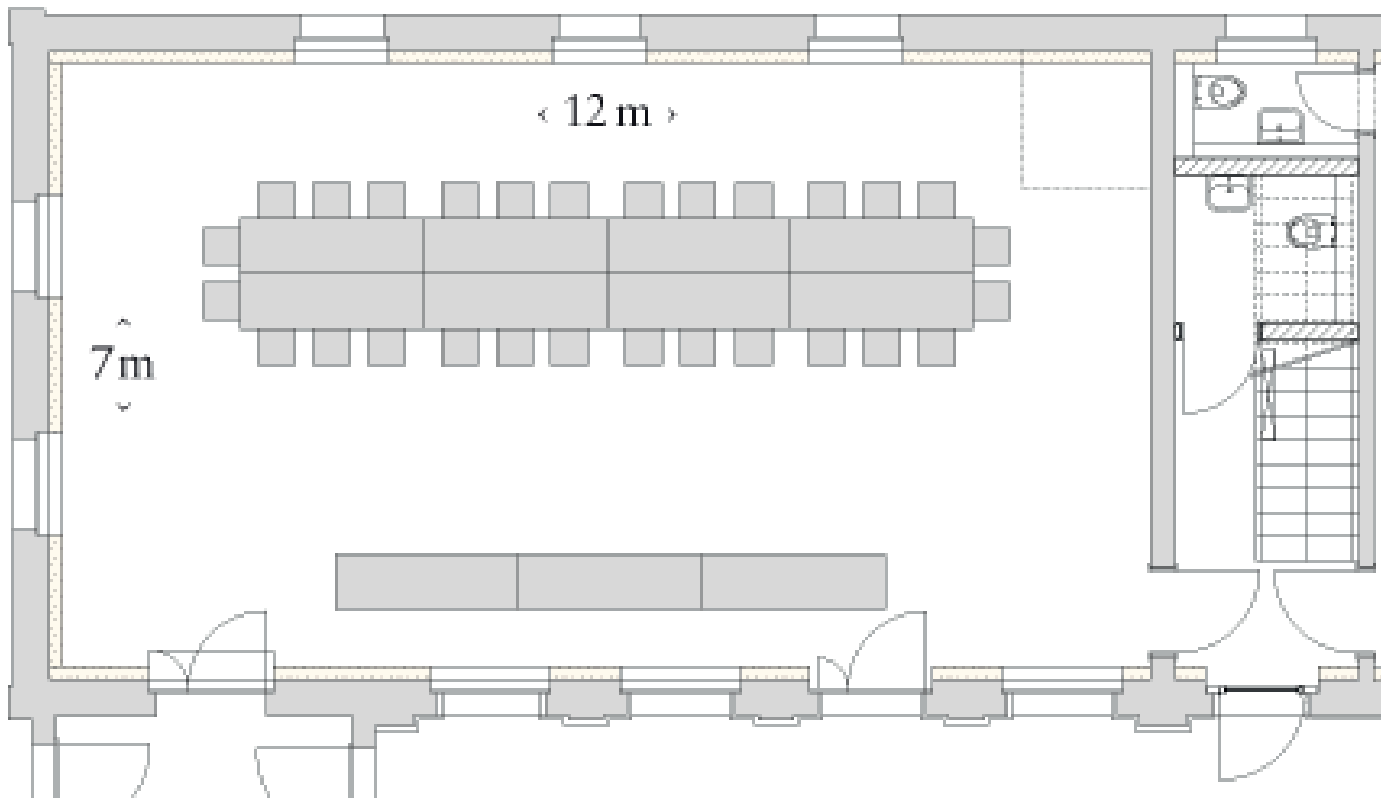
12 Tische, 44 Stühle



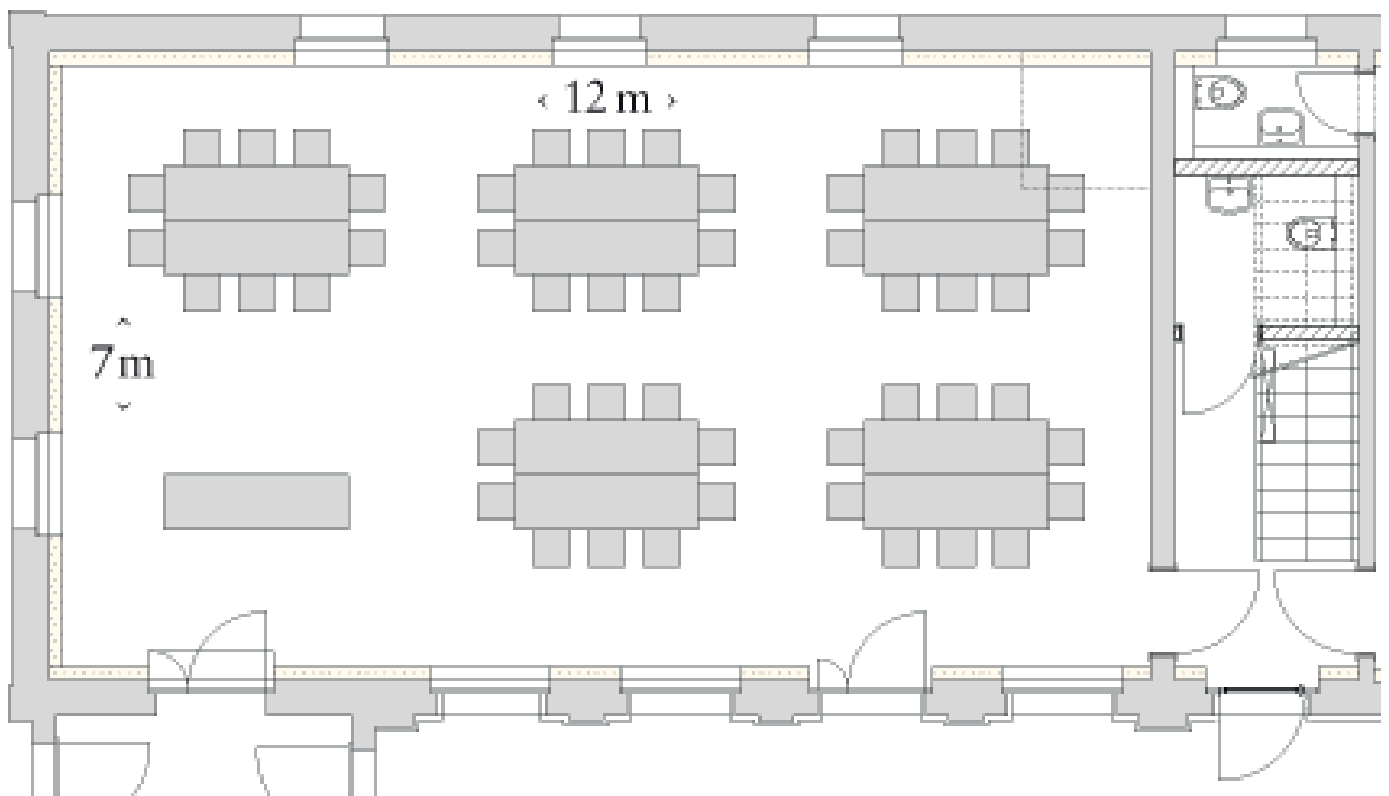
11 Tische, 32 Stühle



8 Tische, 28 Stühle



10 Tische, 50 Stühle



Bankettbestuhlung: 8 Tische, 64 Stühle

